



# Lack of Contribution of p66shc and Its Mitochondrial Translocation to Ischemia-Reperfusion Injury and Cardioprotection by Ischemic Preconditioning

Kerstin Boengler<sup>1</sup>, Péter Bencsik<sup>2,3</sup>, János Palóczy<sup>2,3</sup>, Krisztina Kiss<sup>2,3</sup>, Márton Pipicz<sup>2,3</sup>, Judit Pipis<sup>2</sup>, Péter Ferdinandy<sup>2,3,4</sup>, Klaus-Dieter Schlüter<sup>1</sup> and Rainer Schulz<sup>1\*</sup>

<sup>1</sup> Physiologisches Institut, Justus-Liebig-Universität, Giessen, Germany, <sup>2</sup> Pharmahungary Group, Szeged, Hungary,

<sup>3</sup> Cardiovascular Research Group, Department of Biochemistry, University of Szeged, Szeged, Hungary, <sup>4</sup> Department of Pharmacology and Pharmacotherapy, Semmelweis University, Budapest, Hungary

## OPEN ACCESS

### Edited by:

Pasquale Pagliaro,  
University of Turin, Italy

### Reviewed by:

Tommaso Angelone,  
University of Calabria, Italy  
Carlo Gabriele Tocchetti,  
Federico II University Hospital, Italy

### \*Correspondence:

Rainer Schulz  
rainer.schulz@physiologie.med.  
uni-giessen.de

### Specialty section:

This article was submitted to  
Vascular Physiology,  
a section of the journal  
Frontiers in Physiology

Received: 27 June 2017

Accepted: 08 September 2017

Published: 05 October 2017

### Citation:

Boengler K, Bencsik P, Palóczy J,  
Kiss K, Pipicz M, Pipis J, Ferdinandy P,  
Schlüter K-D and Schulz R (2017)  
Lack of Contribution of p66shc and Its  
Mitochondrial Translocation to  
Ischemia-Reperfusion Injury and  
Cardioprotection by Ischemic  
Preconditioning. *Front. Physiol.* 8:733.  
doi: 10.3389/fphys.2017.00733

Whereas high amounts of reactive oxygen species (ROS) contribute to cardiac damage following ischemia and reperfusion (IR), low amounts function as trigger molecules in the cardioprotection by ischemic preconditioning (IPC). The mitochondrial translocation and contribution of the hydrogen peroxide-generating protein p66shc in the cardioprotection by IPC is unclear yet. In the present study, we investigated the mitochondrial translocation of p66shc, addressed the impact of p66shc on ROS formation after IR, and characterized the role of p66shc in IR injury *per se* and in the cardioprotection by IPC. The amount of p66shc in subsarcolemmal (SSM) and interfibrillar mitochondria (IFM) isolated from wildtype mouse left ventricles (LV) was determined after 40 min normoxic perfusion and after 30 min ischemia and 10 min reperfusion without and with IPC. The p66shc content in SSM (in % of normoxic controls,  $n = 5$ ) was  $174 \pm 16\%$  ( $n = 6$ ,  $p < 0.05$ ) after IR, and was reduced to  $128 \pm 13\%$  after IPC ( $n = 6$ ,  $p = \text{ns}$ ). In IFM, the amount of p66shc remained unchanged (IR:  $81 \pm 7\%$ ,  $n = 6$ ; IPC:  $110 \pm 5\%$ ,  $n = 6$ ,  $p = \text{ns}$ ). IR induced an increase in ROS formation in SSM and IFM isolated from mouse wildtype LV, which was more pronounced in SSM than in IFM ( $1.18 \pm 0.18$  vs.  $0.81 \pm 0.16$ ,  $n = 6$ ,  $p < 0.05$ ). In mitochondria from p66shc-knockout mice (p66shc-KO), the increase in ROS formation by IR was not different between SSM and IFM ( $0.90 \pm 0.11$  vs.  $0.73 \pm 0.08$ ,  $n = 6$ ,  $p = \text{ns}$ ). Infarct size (in % of the left ventricle) was  $51.7 \pm 2.9\%$  in wildtype and  $59.7 \pm 3.8\%$  in p66shc-KO hearts *in vitro* and was significantly reduced to  $35.8 \pm 4.4\%$  (wildtype) and  $34.7 \pm 5.6\%$  (p66shc-KO) by IPC, respectively. *In vivo*, infarct size was  $57.8 \pm 2.9\%$  following IR ( $n = 9$ ) and was reduced to  $40.3 \pm 3.5\%$  by IPC ( $n = 11$ ,  $p < 0.05$ ) in wildtype mice. In p66shc-knockout mice, infarct sizes were similar to those measured in wildtype animals (IR:  $56.2 \pm 4.3\%$ ,  $n = 11$ ; IPC:  $42.1 \pm 3.9\%$ ,  $n = 13$ ,  $p < 0.05$ ). Taken together, the mitochondrial translocation of p66shc following IR and

IPC differs between mitochondrial populations. However, similar infarct sizes after IR and preserved infarct size reductions by IPC in p66shc-KO mice suggest that p66shc-derived ROS are not involved in the cardioprotection by IPC nor do they contribute to IR injury *per se*.

**Keywords:** ischemia/reperfusion, ischemic preconditioning, reactive oxygen species, mitochondria, p66shc

## INTRODUCTION

An imbalance in the formation and removal of reactive oxygen species (ROS) leads to oxidative stress, which plays a role in the development of cardiovascular diseases, such as hypertension (Chen et al., 2017), hypertrophy (Dai et al., 2011; Sag et al., 2014), heart failure (Akhmedov A. T. et al., 2015), and myocardial injury following ischemia and reperfusion (IR) (Granger and Kvietyts, 2015). During IR, a certain amount of ROS is generated during ischemia, whereas the majority of ROS is formed at the onset of reperfusion (Zweier et al., 1987; Bolli et al., 1989). High amounts of ROS contribute to myocardial injury and ultimately cell death via detrimental effects on proteins and lipids and also on the histone-free mitochondrial DNA. However, ROS do not only participate in myocardial damage, they also function as trigger molecules in the cardioprotection by ischemic preconditioning (IPC). Here, a modest ROS formation is suggested to activate signal transduction cascades which finally confer protection against the burst of ROS at reperfusion. Indeed, ROS scavenging during the preconditioning cycles of IR as well as prior to reperfusion abolish the infarct size reduction by IPC (Skyschally et al., 2003; Liu et al., 2008). It is generally accepted that mitochondria represent the predominant source of ROS. Within mitochondria, ROS are formed by the electron transport chain (ETC)—especially from ETC complexes I, II and III (Barja, 1999)—with around 0.2% of the oxygen consumed by the ETC used for ROS formation (St-Pierre et al., 2002). In addition to the ETC, mitochondrial ROS are also produced by monoamino oxidases (MAO), which transfer electrons from amine compounds to oxygen and thereby generate hydrogen peroxide.

Another protein contributing to mitochondrial ROS formation is p66shc, an ubiquitously expressed member of the spontaneous human combustion (shc) family. Together with p46shc and p52shc, p66shc represents an isoform encoded by the human shcA locus. The structure of p66shc includes an aminoterminal CH2 domain (collagen homology domain), followed by a phosphotyrosine binding (PTB) domain, another collagen-homology (CH1) domain, and a carboxyterminal src-homology (SH2) domain. The PTB domain allows the interaction with tyrosine-containing peptides, the CH1 domain of p66shc contains two major tyrosine phosphorylation sites, whereas the SH2 domain is important for protein-protein interactions. The important phosphorylation site serine 36 is located in the CH2 domain of p66shc. Under basal conditions, the majority of p66shc resides in the cytosol, but translocates into the mitochondria upon stress signals (Pinton et al., 2007). For this translocation, the phosphorylation of p66shc at serine 36 by protein kinase C beta (PKC $\beta$ ) is important (Pinton et al., 2007).

Within mitochondria, p66shc is present in the intermembrane space. Here, p66shc oxidizes reduced cytochrome c and thereby catalyzes the reduction of oxygen to hydrogen peroxide (Giorgio et al., 2005). Accordingly, p66shc-deficient cells have decreased levels of ROS (Trinei et al., 2002; Carpi et al., 2009). The reduced ROS formation in p66shc-deficient mice has been suggested to prolong the life span of these animals (Migliaccio et al., 1999), however, when the mice are housed under more natural conditions this effect is abolished (Giorgio et al., 2012). p66shc-mediated ROS formation is linked to cardiovascular pathologies such as hypertrophy (Graiani et al., 2005) and heart failure (Rota et al., 2006) (for review see Di Lisa et al., 2017). Also, heart-rupture is reduced in p66shc-deficient mice following myocardial infarction (Baysa et al., 2015). The measurement of myocardial damage following IR in wildtype and p66shc-knockout mice shows conflicting results: whereas in one study the ablation of p66shc elicits cardiac protection (Carpi et al., 2009), another study displays larger infarcts in p66shc-deficient mice following IR (Akhmedov A. et al., 2015). Studies on the role of p66shc in the cardioprotection by IPC *in vivo* are still lacking.

In the present study, we investigated the translocation of the protein into mitochondrial subpopulations after IR and IPC. Also, the p66shc-mediated ROS formation induced by IR was studied. In addition, we characterized the impact of p66shc on the cardioprotection by IPC in mouse hearts *in vitro* and *in vivo*.

## MATERIALS AND METHODS

### Animals

The present study conforms to the Guide for the Care and Use of Laboratory Animals published by the US National Institutes of Health (NIH publication No. 85–23, revised 1996) and was approved by the animal welfare office of the Justus-Liebig-University Giessen as well as the National Scientific Ethical Committee on Animal Experimentation, Budapest, Hungary. In the study, 12–22 weeks old male and female C57Bl6/J mice (25–30 g, Janvier, Le Genest-Saint-Isles, France) and p66shc knockout (p66shc-KO) mice were used. Mice were kept in dark/light cycles of 12 h each and had free access to standard chow and drinking water.

### Ischemia/Reperfusion *in Vitro*

Mice were anesthetized with 5% isoflurane and killed by cervical dislocation. Thereafter, hearts were rapidly excised and the aorta was cannulated for retrograde perfusion with an Aortic Cannula for mouse hearts ( $\varnothing$  1 mm, Hugo Sachs Elektronik-Harvard Apparatus, March, Germany) connected to a Langendorff perfusion system. Hearts were perfused with 37°C warm modified Krebs Henseleit buffer (containing in mM:

NaCl 118, KCl 4.7, MgSO<sub>4</sub> 0.8, KH<sub>2</sub>PO<sub>4</sub> 1.2, glucose 5, CaCl<sub>2</sub> 2.5, NaHCO<sub>3</sub> 25, pyruvate 1.9, continuously gased with 95% O<sub>2</sub>, 5% CO<sub>2</sub>, pH 7.4) at a constant perfusion pressure of 70 mmHg (transduced by a Replacement Transducer Head for APT300 Pressure Transducer, Hugo Sachs Elektronik-Harvard Apparatus). A balloon was inserted into the left ventricle and was connected to a pressure transducer (Combitrans 1-fach Set Mod.II University Giessen, B. Braun, Melsungen, Germany) for assessment of ventricular performance. The balloon was inflated to yield a left ventricular end-diastolic pressure of 12–14 mmHg, which was kept constant thereafter. Hearts were paced during measurements at 600 bpm. Left ventricular developed pressure (LVDP, systolic pressure—diastolic pressure) was recorded. Perfused hearts were left to stabilize for 5 min. Ischemia was induced by stopping flow and pacing. The following protocols were performed:

a) p66shc translocation and ROS formation

Normoxia: 40 min normoxia

IR: 30 min ischemia, 10 min reperfusion

IPC: Three times 3 min ischemia, 5 min reperfusion, followed by 30 min ischemia and 10 min reperfusion

At the end of the protocol, hearts were used to isolate mitochondria

b) Infarct size determination

IR: 45 min ischemia, 120 min reperfusion

IPC: Three times 3 min ischemia, 5 min reperfusion, followed by 45 min ischemia and 120 min reperfusion

After 120 min of reperfusion, the hearts were removed from the perfusion apparatus and frozen at  $-20^{\circ}\text{C}$  for 30 min. Subsequently, hearts were cut in 7–8 slices and incubated in 1.2% triphenyl-tetrazolium chloride for 20 min at  $37^{\circ}\text{C}$ . Heart slices were then fixated in 7% formalin at room temperature overnight. Digital images were taken from both sides of the heart slices with a M60 microscope (Leica, Wetzlar, Germany) at 2.5-fold magnification. Infarct size was determined by planimetry using the Leica Application Suite LAS version 4.6 (Leica).

The use of either 30 or 45 min ischemia was due to the necessity to compare data of p66shc translocation with previous studies (where 30 min ischemia were analyzed, Yang et al., 2014) and to induce substantial myocardial infarction in order to demonstrate effective cardioprotection by IPC (45 min ischemia).

## Ischemia/Reperfusion *in Vivo*

Mice were weighed (weight range  $22.1 \pm 1.0$ – $24.7 \pm 1.1$  g,  $p = \text{ns}$  between groups) and anesthetized with sodium pentobarbital (Euthasol, Produlab Pharma b.v., Raamsdonksveer, The Netherlands; 90 mg/kg bolus dose followed by 15–20 mg/kg when required during the experiment). The hair in the neck and chest area was removed by using a depilatory cream. Maintenance of body core temperature was assisted using a constant temperature heating pad. The trachea was intubated with a plastic cannula connected to a rodent ventilator (Model Minivent 845, Harvard Apparatus, Holliston, MA). The animals were ventilated with room air, volume and rate set-ups accorded to the recommendation of the manufacturer (100–240  $\mu\text{L}$ , 120–150 breath/min according to the weight of the animal). Surface-lead ECG and body core temperature

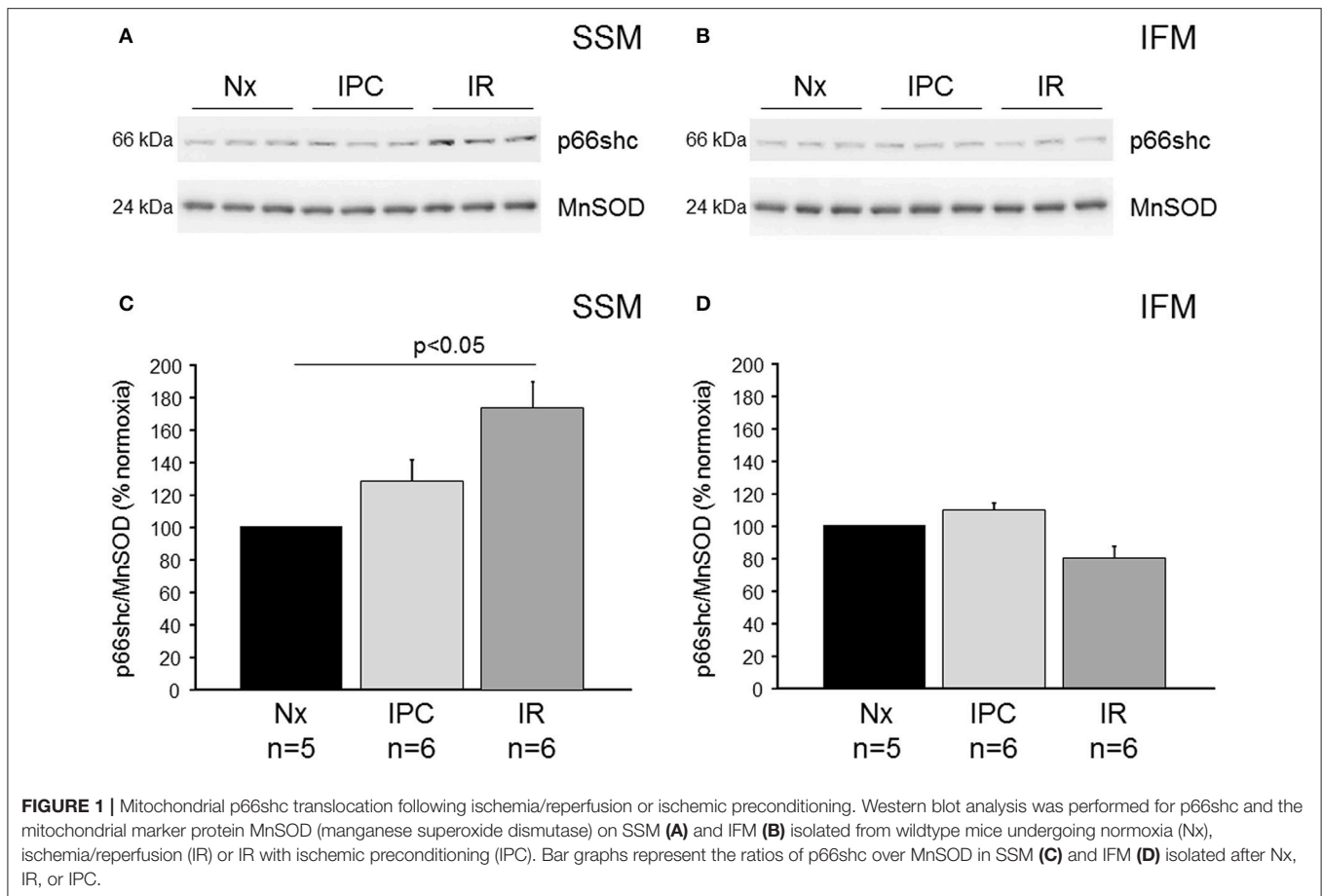
were monitored throughout the experiments to ensure the stability of the preparation (Haemosys data acquisition system, Experimetria, Budapest, Hungary). The heart rates ranged from  $429 \pm 17$  to  $451 \pm 20$  bpm and were not significantly different between groups. The chest was opened at the 4th intercostal space and an 8-0 Prolene suture was placed around the middle portion of the left anterior descending branch (LAD) of the left coronary artery. Then the suture was looped and a piece of PE-10 cannula was placed into the loop. For coronary artery occlusion and reperfusion, both strands of the suture were pulled and fixed thereby pressing the plastic cannula onto the surface of the heart directly above the coronary artery, and then released. Mice were subjected to 45 min occlusion of the left coronary artery (test ischemia) and then released to develop acute myocardial infarction. In IPC groups, mice were subjected to 5 min ischemia/5 min reperfusion in four cycles prior to test ischemia. To ensure recanalization of the occluded vessel, sodium heparin was administered i.p. at 100 U/kg dose three times during the surgeries: 45 min before test ischemia; 5 min before the onset of reperfusion, and at the 115th min of reperfusion.

After 120 min of reperfusion, risk area was re-occluded, and mice were injected with 0.4 ml of 2% Evans blue dye through the apex of the left ventricle. Following Evans staining, hearts were isolated, right ventricle was removed and left ventricles (LV) were cut into seven transversal slices. Heart slices were washed in PBS buffer for 1 min to remove excess dye and then incubated in 1% triphenyl-tetrazolium-chloride for 10 min at  $37^{\circ}\text{C}$  followed by formalin fixation for 10 min. Digital images were taken from both surface of heart slices by a Nikon DSLR camera (Nikon Corporation, Tokyo, Japan). Planimetric evaluation was carried out to determine infarct size using InfarctSize<sup>TM</sup> software version 2.5, (Pharmahungary, Szeged, Hungary).

## Isolation of Mitochondria

Subsarcolemmal (SSM) and inter-fibrillar mitochondria (IFM) were isolated as previously described (Boengler et al., 2009). All steps were performed at  $4^{\circ}\text{C}$ . Hearts were washed in buffer A (100 mM KCl, 50 mM 3-[N-Morpholino]-propanesulfonic acid (MOPS), 5 mM MgSO<sub>4</sub>, 1 mM ATP, 1 mM EGTA, pH 7.4), weighed, the tissue was minced in 10 ml/g buffer A with scissors and was then disrupted with a Potter-Elvehjem tissue homogenizer. The homogenate was centrifuged for 10 min at 800 g. The resulting supernatant, which contained the SSM, was centrifuged for 10 min at 8,000 g. The sedimented mitochondria were washed in buffer A and were resuspended in a small volume of buffer A. The sediment of the first centrifugation, which contained the IFM, was resuspended in buffer A (10 ml/g tissue). The protease nagarse was added (Bacterial type XXIV, Sigma, 8 U/g), incubated at  $4^{\circ}\text{C}$  for 1 min and the samples were then disrupted using a Potter-Elvehjem tissue homogenizer. Subsequently, samples were centrifuged for 10 min at 800 g, and IFM were collected by centrifugation of the supernatant for 10 min at 8,000 g. The sedimented IFM were washed by resuspension in buffer A and centrifugation (8,000 g for 10 min), and were finally resuspended in buffer A. These mitochondrial preparations were used to study ROS formation. To analyse the amount of p66shc in SSM and IFM by Western





demonstrating effective cardioprotection not only in WT but also in p66shc-KO mice *in vivo* (Figure 4).

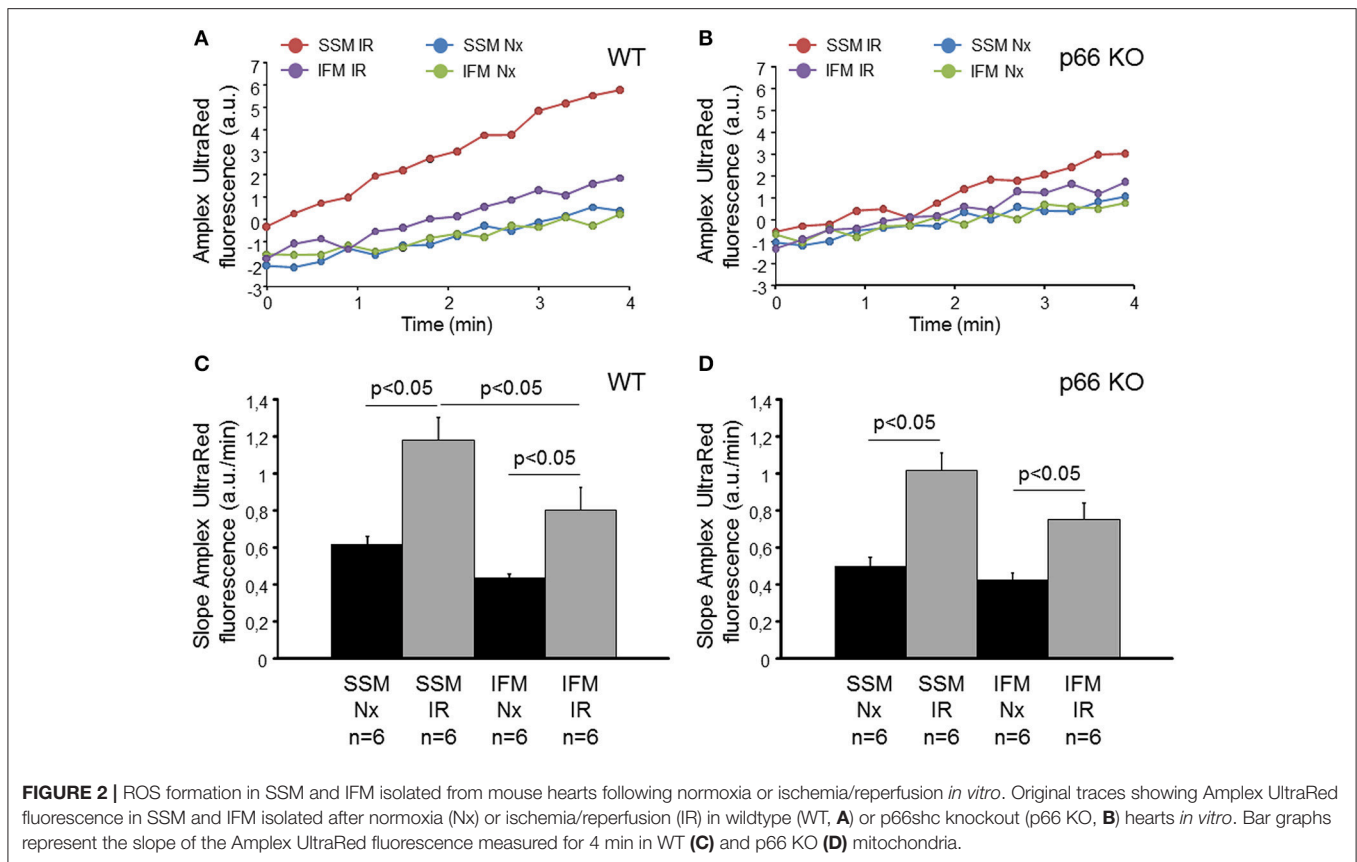
## DISCUSSION

The present study demonstrates that the translocation of p66shc after IR or IPC differs between mitochondrial subpopulations. An increase in the mitochondrial level of p66shc in SSM is associated with enhanced ROS formation after IR. However, the altered mitochondrial amounts of p66shc after IR or IPC had no consequences for infarct development *per se* or the cardioprotection, since p66shc knockout hearts showed an effective infarct size reduction by IPC both *in vitro* and *in vivo*.

The presence of p66shc has been described in mitochondria of several cell types, including mouse embryonic fibroblasts (Nemoto et al., 2006), human endothelial cells (Paneni et al., 2015; Spescha et al., 2015; Zhu et al., 2015), and mitochondria isolated from cardiac tissue (Yang et al., 2014). Cardiomyocytes contain at least two mitochondrial subpopulations, the SSM and IFM, which differ in form and function (Palmer et al., 1977, 1986; Boengler et al., 2009). When analyzing the presence of p66shc in mitochondria of ventricular origin, only SSM have been studied so far (Yang et al., 2014). In the present study, we detected p66shc not only in cardiac SSM but also in IFM. Under basal conditions,

the majority of p66shc resides in the cytosol and a translocation of the protein into the mitochondrial intermembrane space occurs under stress conditions, among them IR (Giorgio et al., 2005; Zhu et al., 2015). A previous study demonstrates that the translocation of p66shc into SSM is dependent on the duration of IR in guinea pig hearts (Yang et al., 2014). Here, 30 min of ischemia were not sufficient to increase the mitochondrial amount of p66shc, whereas 30 min ischemia and 10 min reperfusion enhanced the mitochondrial content of the protein. In the present study, the increased mitochondrial amount of p66shc after 30 min ischemia and 10 min reperfusion in SSM was confirmed, but this translocation was specific for SSM since the mitochondrial amounts of p66shc in IFM was not affected by IR.

The import of p66shc into mitochondria requires the phosphorylation at serine 36 by protein kinase C beta (PKC $\beta$ ), and the subsequent prolyl-isomerization by peptidyl-prolyl cis-trans isomerase 1 (Pin1) is important. Indeed, it has already been shown that 30 min IR induces the activation/phosphorylation of PKC $\beta$  and simultaneously that of p66shc at serine 36, and that the inhibition of PKC $\beta$  decreases p66shc phosphorylation and the mitochondrial translocation of the protein (Kong et al., 2008; Yang et al., 2014). However, serine 36 phosphorylation of p66shc may also require c-Jun terminal kinase activity (Khalid et al., 2016). In human umbilical vein endothelial cells, hypoxia/reoxygenation



**TABLE 1 |** Summary of the baseline parameters and hemodynamic data throughout ischaemia-reperfusion protocols *in vitro*.

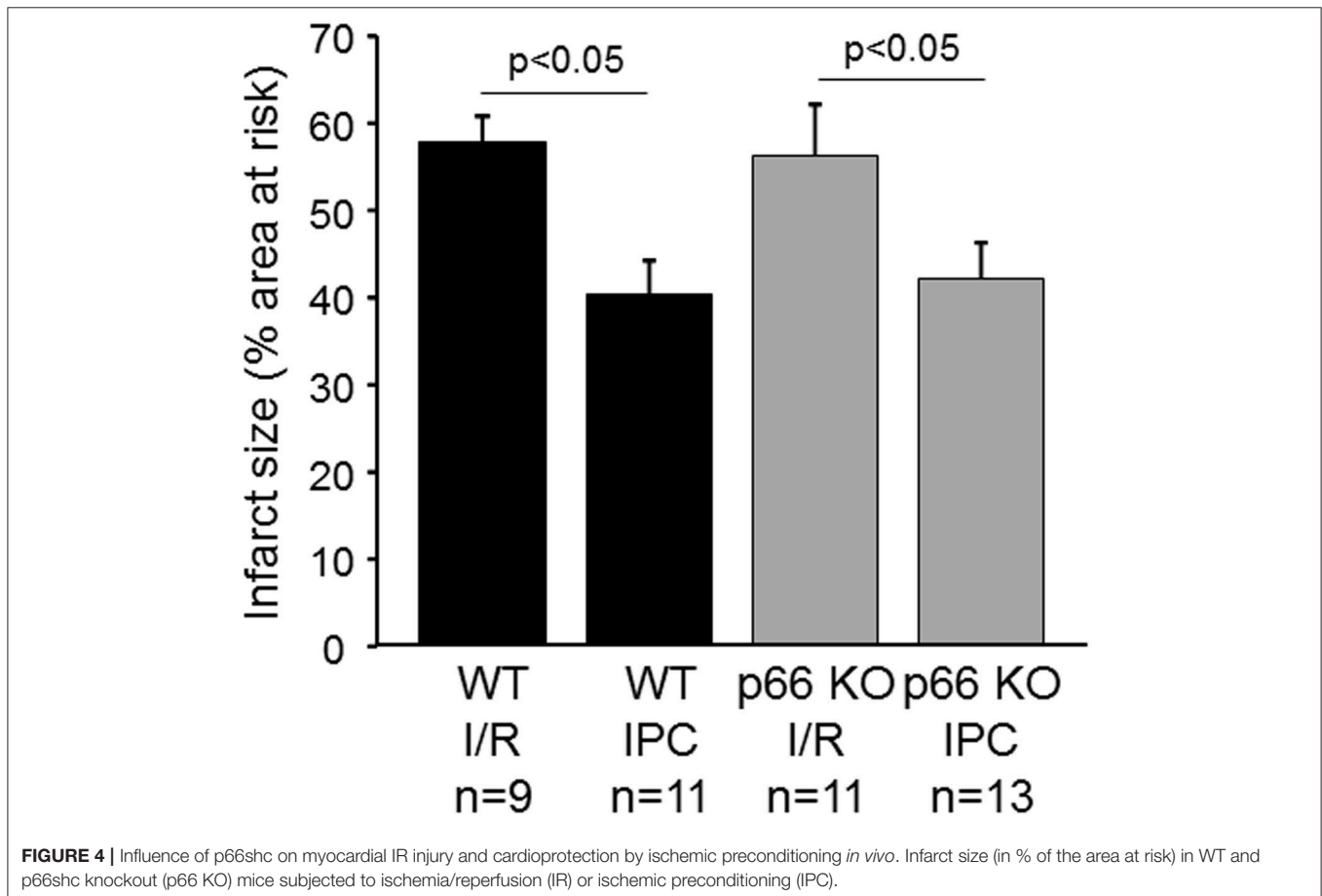
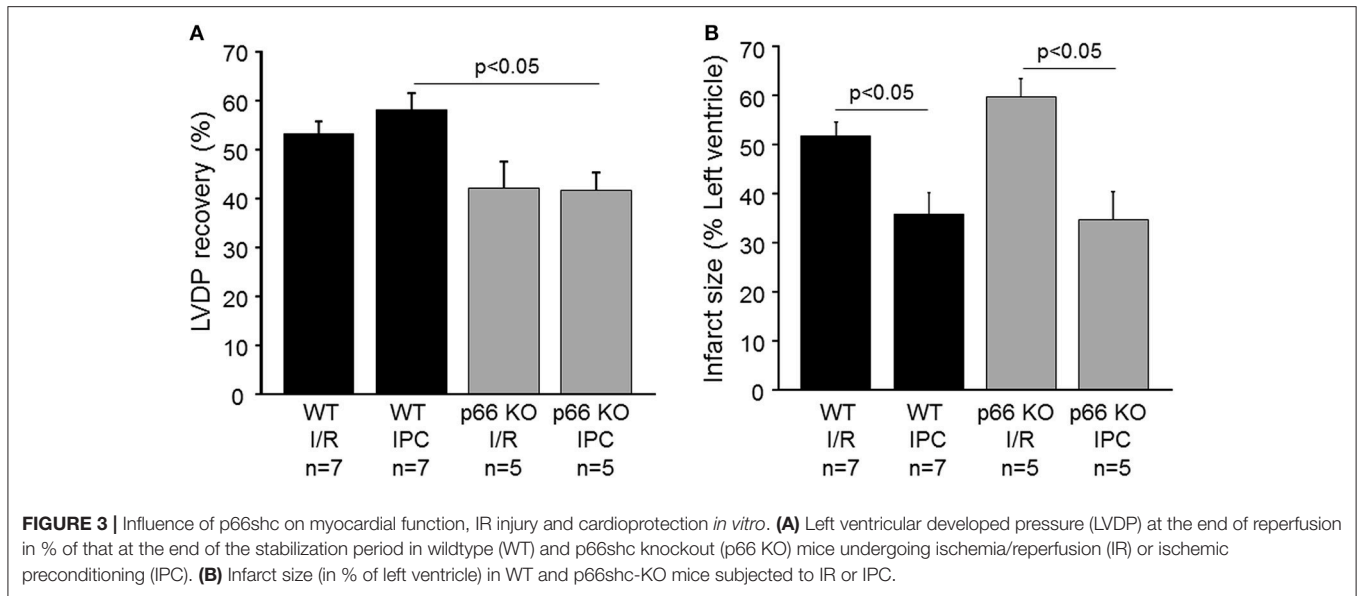
Genotype	Protocol	n-value	Body weight (g)	Heart weight/body weight (mg/g)	EDP (mm Hg)			LVDP (mm Hg)		
					basal	10 min reperfusion	End of reperfusion	basal	10 min reperfusion	End of reperfusion
WT	IR <i>in vitro</i>	7	28.9 ± 1.2	6.25 ± 0.27	12.8 ± 0.4	51.4 ± 6.1	26.3 ± 4.1	107.0 ± 3.7	59.8 ± 11.9	56.7 ± 2.8
WT	IPC <i>in vitro</i>	7	27.7 ± 1.5	6.51 ± 0.24	11.1 ± 0.7	25.7 ± 2.5*	14.2 ± 0.9*	101.8 ± 7.7	67.5 ± 4.2	59.5 ± 6.4
p66 KO	IR <i>in vitro</i>	5	25.2 ± 0.5	6.91 ± 0.51	12.0 ± 1.0	62.7 ± 11.3	31.0 ± 4.4	90.6 ± 10.5	32.7 ± 8.3*	36.0 ± 2.7*
p66 KO	IPC <i>in vitro</i>	5	26.0 ± 0.9	6.30 ± 0.48	11.6 ± 0.9	33.8 ± 16.0	19.0 ± 7.4	95.4 ± 10.3	31.0 ± 8.1**	38.7 ± 3.5**

Enddiastolic pressure (EDP) and left ventricular developed pressure (LVDP) in wildtype and p66shc knockout (p66 KO) hearts undergoing IR without and with ischemic preconditioning (IPC). Basal data were collected at the end of the stabilization period. \* $p < 0.05$  vs. I/R WT, \*\* $p < 0.05$  vs. IPC WT.

is associated with increased phosphorylation and mitochondrial translocation of p66shc (Zhu et al., 2015). Here, the increased p66shc phosphorylation is attributed to decreased activity of phosphatase 2A rather than to increased activity of PKC $\beta$ . The mitochondrial translocation of p66shc after intestinal IR injury is abrogated following the inhibition of Pin1 leading to improved survival (Feng et al., 2017). Under high glucose conditions, the phosphorylation and mitochondrial translocation of p66shc is facilitated by a Sirtuin 1-regulated lysine acetylation (Kumar et al., 2017). Although we tried to measure serine 36 phosphorylation of p66shc by Western blot and immunoprecipitation in the present study, but were unable to detect specific signals with available antibodies (data not

shown), we cannot correlate p66shc phosphorylation with the mitochondrial amount of the protein.

The ablation of p66shc is associated with a reduced ROS formation after IR in the brain (Spescha et al., 2013) as well as in the heart (Carpi et al., 2009). However, one study also shows that the deletion of p66shc (via siRNA or by genetic ablation) has no influence on myocardial ROS formation following IR (Spescha et al., 2015). In our study, we found an increase in ROS formation after IR compared to normoxia in SSM and IFM of wildtype and p66shc-deficient mice. In wildtype mice, this increase was more pronounced in SSM than in IFM and therefore correlated with the mitochondrial translocation of p66shc. However,



in mitochondria isolated from p66shc-deficient mice ROS formation was not different in SSM and IFM after IR indicating that p66shc contributes sufficient amounts to the ROS formation induced by myocardial IR.

Since ROS are known to contribute to either myocardial damage or protection—depending on their timing and their amount—p66shc represents an interesting target to be studied in IR and protection from it. p66shc induces opening of

the mitochondrial permeability transition pore, which leads to swelling of the organelle, rupture of the outer mitochondrial membrane and finally cell death (Giorgio et al., 2005). Therefore, the deletion of p66shc has been suggested to be protective in IR injury, and indeed IR in the brain induced by transient middle cerebral artery occlusion results in reduced stroke size in p66shc-KO mice or in WT mice after post-ischemic silencing of p66shc compared to that in control mice (Spescha et al., 2013, 2015). Also, muscle fiber necrosis is reduced in p66shc-deficient mice after hindlimb IR (Zaccagnini et al., 2004). In the heart, the data on the role of p66shc in IR injury are controversial. Whereas, one study demonstrates the maintenance of cell viability and reduced oxidative stress in p66shc-deficient hearts following IR *in vitro* (Carpi et al., 2009), the measurement of myocardial infarction in p66shc-deficient mice *in vivo* shows larger infarct sizes after IR compared to that in wildtype mice (Akhmedov A. et al., 2015). However, myocardial infarction is untypically small in this study, and the increase in myocardial damage is only evident after short term ischemia (30 min), whereas with the prolongation of ischemia to 45 or 60 min no differences in infarct sizes occur between wildtype and p66shc-deficient mice. In the present study, we determined the infarct sizes of wildtype and p66shc-deficient mice undergoing IR (with 45 min of ischemia) *in vitro* and *in vivo* and we observed similar myocardial infarction in both genotypes indicating that p66shc—and the p66shc-induced ROS formation—does not contribute to IR injury *per se*.

Due to the important role of ROS in IR injury and in the protection by IPC, p66shc represents a putative target of such protective intervention. Indeed, in cortical cells chemical preconditioning induces serine 36 phosphorylation of p66shc, subsequent mitochondrial translocation of the protein and finally reduces cell death (Brown et al., 2010). Whereas, this study suggests a protective role of p66shc in preconditioning, another study demonstrates that IPC in the liver is protective against IR injury via a pathway involving the Sirtuin 1-mediated downregulation of p66shc (Yan et al., 2014). In the present study, we measured the translocation of p66shc into mitochondria after perfusion of isolated wildtype hearts under normoxic control conditions, after IR and as well as after IPC and found that whereas IR and IPC did not alter the mitochondrial amount of p66shc in IFM, the IR-induced increase of p66shc in SSM was abrogated after IPC. Thus, the inhibition of mitochondrial p66shc import by IPC may reduce myocardial ROS formation to such amounts which are necessary for triggering cardioprotection.

In addition, the present study addressed the influence of p66shc on myocardial function and the infarct size development following IR without and with IPC *in vitro* and *in vivo*.

Whereas the recovery of the LVDP was improved in wildtype compared to p66shc-deficient mice after IPC, the enhanced functional recovery was not a consequence of altered myocardial infarction, since IPC reduced infarct sizes to similar extents in both genotypes *in vitro*. Comparable results were obtained in the *in vivo* situation where IPC was equally cardioprotective in wildtype and in p66shc-deficient mice. Therefore, despite the putative normalization of the IR-induced increase of ROS by IPC in SSM, p66shc-mediated ROS formation is no prerequisite for the cardioprotection by IPC. The role of p66shc in IPC in the

heart has previously been investigated in one study only (Carpi et al., 2009). Here, myocardial damage was assessed as the release of lactate dehydrogenase (LDH) from isolated hearts *in vitro*. Compared to wildtype mice, LDH release was already reduced in p66shc-deficient mice after IR and was not further affected by IPC. Therefore, it is difficult to assess whether or not IPC was capable to additionally decrease LDH release.

Our data demonstrate that in healthy hearts p66shc is of no importance for myocardial I/R injury and that the protein is also not involved in the cardioprotection by classical ischemic preconditioning. However, alterations in p66shc expression/phosphorylation occur in pathological conditions in humans, such as in muscular pericytes of diabetic patients (Vono et al., 2016), in peripheral blood monocytes and renal tissue biopsies of patients with diabetic nephropathy (Xu et al., 2016), and also in peripheral blood monocytes of patients with acute coronary syndrome, but not with stable coronary artery disease (Franzeck et al., 2012). Since such risk factors and co-morbidities may abrogate the cardioprotection by preconditioning (Ferdinandy et al., 2014), it remains to be elucidated whether p66shc contributes toward cardioprotection under pathological conditions.

Taken together, our study demonstrates that within cardiac mitochondria p66shc is present in SSM as well as in IFM. The IR-induced translocation of p66shc into SSM correlates with the ROS formation in this mitochondrial subpopulation. However, ROS generation by p66shc is not important for myocardial injury, since the ablation of p66shc does not influence infarct size after IR *per se*. Whereas, IPC normalizes the IR-induced increase of p66shc in SSM, this process has no relevance for cardioprotection since p66shc-deficient mice show effective infarct size reduction *in vitro* and *in vivo*.

## AUTHOR CONTRIBUTIONS

KB designed and performed the research on isolated mitochondria; PB, JaP, KK, MP, and JuP performed the research on myocardial infarction *in vivo*; PF, KS, and RS designed and supervised the research. All authors analyzed the data, drafted the manuscript, and approved the final version of the manuscript.

## FUNDING

KB and RS are supported by the German Research Foundation (BO-2955/2-1, SCHU 843/9-1, and CRC1213-B05) and PF and PB by the National Research, Development, and Innovation Office, Hungary (NVKP 16-1-2016-0017). KS and RS are funded by the German Research Foundation SFB1213. PB was supported by the János Bolyai Research Scholarship of the Hungarian Academy of Sciences.

## ACKNOWLEDGMENTS

The authors would like to thank Anna Reis, Elvira Ungefug, and Nadine Woitasky for excellent technical assistance and Marco Giorgio (Milan, Italy) for kindly providing the p66shc-KO mice.



## REFERENCES

- Akhmedov, A., Montecucco, F., Braunersreuther, V., Camici, G. G., Jakob, P., Reiner, M. F., et al. (2015). Genetic deletion of the adaptor protein p66Shc increases susceptibility to short-term ischaemic myocardial injury via intracellular salvage pathways. *Eur. Heart J.* 36, 516–526a. doi: 10.1093/eurheartj/ehu400
- Akhmedov, A. T., Rybin, V., and Marin-Garcia, J. (2015). Mitochondrial oxidative metabolism and uncoupling proteins in the failing heart. *Heart Fail. Rev.* 20, 227–249. doi: 10.1007/s10741-014-9457-4
- Barja, G. (1999). Mitochondrial oxygen radical generation and leak: sites of production in states 4 and 3, organ specificity, and relation to aging and longevity. *J. Bioenerg. Biomembr.* 31, 347–366. doi: 10.1023/A:1005427919188
- Baysa, A., Sagave, J., Carpi, A., Zaglia, T., Campesan, M., Dahl, C. P., et al. (2015). The p66ShcA adaptor protein regulates healing after myocardial infarction. *Basic Res. Cardiol.* 110:13. doi: 10.1007/s00395-015-0470-0
- Boengler, K., Bulic, M., Schreckenberg, R., Schluter, K. D., and Schulz, R. (2017). The gap junction modifier ZP1609 decreases cardiomyocyte hypercontracture following ischaemia/reperfusion independent from mitochondrial connexin 43. *Br. J. Pharmacol.* 174, 2060–2073. doi: 10.1111/bph.13804
- Boengler, K., Stahlhofen, S., Van De Sand, A., Gres, P., Ruiz-Meana, M., Garcia-Dorado, D., et al. (2009). Presence of connexin 43 in subsarcolemmal, but not in inter-fibrillar cardiomyocyte mitochondria. *Basic Res. Cardiol.* 104, 141–147. doi: 10.1007/s00395-009-0007-5
- Bolli, R., Jeroudi, M. O., Patel, B. S., Dubose, C. M., Lai, E. K., Roberts, R., et al. (1989). Direct evidence that oxygen-derived free radicals contribute to postischemic myocardial dysfunction in the intact dog. *Proc. Natl. Acad. Sci. U.S.A.* 86, 4695–4699. doi: 10.1073/pnas.86.12.4695
- Brown, J. E., Zeiger, S. L., Hettlinger, J. C., Brooks, J. D., Holt, B., Morrow, J. D., et al. (2010). Essential role of the redox-sensitive kinase p66shc in determining energetic and oxidative status and cell fate in neuronal preconditioning. *J. Neurosci.* 30, 5242–5252. doi: 10.1523/JNEUROSCI.6366-09.2010
- Carpi, A., Menabo, R., Kaludercic, N., Pelicci, P., Di Lisa, F., and Giorgio, M. (2009). The cardioprotective effects elicited by p66(Shc) ablation demonstrate the crucial role of mitochondrial ROS formation in ischemia/reperfusion injury. *Biochim. Biophys. Acta* 1787, 774–780. doi: 10.1016/j.bbabbio.2009.04.001
- Chen, Q., Wang, Q., Zhu, J., Xiao, Q., and Zhang, L. (2017). Reactive oxygen species: key regulators in vascular health and diseases. *Br. J. Pharmacol.* doi: 10.1111/bph.13828. [Epub ahead of print].
- Dai, D. F., Johnson, S. C., Villarin, J. J., Chin, M. T., Nieves-Cintrón, M., Chen, T., et al. (2011). Mitochondrial oxidative stress mediates angiotensin II-induced cardiac hypertrophy and Galphaq overexpression-induced heart failure. *Circ. Res.* 108, 837–846. doi: 10.1161/CIRCRESAHA.110.232306
- Di Lisa, F., Giorgio, M., Ferdinandy, P., and Schulz, R. (2017). New aspects of p66Shc in ischaemia reperfusion injury and other cardiovascular diseases. *Br. J. Pharmacol.* 174, 1690–1703. doi: 10.1111/bph.13478
- Feng, D., Yao, J., Wang, G., Li, Z., Zu, G., Li, Y., et al. (2017). Inhibition of p66Shc-mediated mitochondrial apoptosis via targeting prolyl-isomerase Pin1 attenuates intestinal ischemia/reperfusion injury in rats. *Clin. Sci.* 131, 759–773. doi: 10.1042/CS20160799
- Ferdinandy, P., Hausenloy, D. J., Heusch, G., Baxter, G. F., and Schulz, R. (2014). Interaction of risk factors, comorbidities, and comedications with ischemia/reperfusion injury and cardioprotection by preconditioning, postconditioning, and remote conditioning. *Pharmacol. Rev.* 66, 1142–1174. doi: 10.1124/pr.113.008300
- Franzcek, F. C., Hof, D., Spescha, R. D., Hasun, M., Akhmedov, A., Steffel, J., et al. (2012). Expression of the aging gene p66Shc is increased in peripheral blood monocytes of patients with acute coronary syndrome but not with stable coronary artery disease. *Atherosclerosis* 220, 282–286. doi: 10.1016/j.atherosclerosis.2011.10.035
- Giorgio, M., Berry, A., Berniakovich, I., Poletaeva, I., Trinei, M., Stendardo, M., et al. (2012). The p66Shc knocked out mice are short lived under natural condition. *Aging Cell* 11, 162–168. doi: 10.1111/j.1474-9726.2011.00770.x
- Giorgio, M., Migliaccio, E., Orsini, F., Paolucci, D., Moroni, M., Contursi, C., et al. (2005). Electron transfer between cytochrome c and p66Shc generates reactive oxygen species that trigger mitochondrial apoptosis. *Cell* 122, 221–233. doi: 10.1016/j.cell.2005.05.011
- Graiani, G., Lagrasta, C., Migliaccio, E., Spillmann, F., Meloni, M., Madeddu, P., et al. (2005). Genetic deletion of the p66Shc adaptor protein protects from angiotensin II-induced myocardial damage. *Hypertension* 46, 433–440. doi: 10.1161/01.HYP.0000174986.73346.ba
- Granger, D. N., and Kvietyts, P. R. (2015). Reperfusion injury and reactive oxygen species: the evolution of a concept. *Redox Biol.* 6, 524–551. doi: 10.1016/j.redox.2015.08.020
- Khalid, S., Drasche, A., Thurner, M., Hermann, M., Ashraf, M. I., Fresser, F., et al. (2016). cJun N-terminal kinase (JNK) phosphorylation of serine 36 is critical for p66Shc activation. *Sci. Rep.* 6:20930. doi: 10.1038/srep20930
- Kong, L., Andrassy, M., Chang, J. S., Huang, C., Asai, T., Szabolcs, M. J., et al. (2008). PKC $\beta$  modulates ischemia-reperfusion injury in the heart. *Am. J. Physiol. Heart Circ. Physiol.* 294, H1862–H1870. doi: 10.1152/ajpheart.01346.2007
- Kumar, S., Kim, Y. R., Vikram, A., Naqvi, A., Li, Q., Kassan, M., et al. (2017). Sirtuin1-regulated lysine acetylation of p66Shc governs diabetes-induced vascular oxidative stress and endothelial dysfunction. *Proc. Natl. Acad. Sci. U.S.A.* 114, 1714–1719. doi: 10.1073/pnas.1614112114
- Liu, Y., Yang, X. M., Iliodromitis, E. K., Kremastinos, D. T., Dost, T., Cohen, M. V., et al. (2008). Redox signaling at reperfusion is required for protection from ischemic preconditioning but not from a direct PKC activator. *Basic Res. Cardiol.* 103, 54–59. doi: 10.1007/s00395-007-0683-y
- Migliaccio, E., Giorgio, M., Mele, S., Pelicci, G., Reboldi, P., Pandolfi, P. P., et al. (1999). The p66shc adaptor protein controls oxidative stress response and life span in mammals. *Nature* 402, 309–313. doi: 10.1038/46311
- Nemoto, S., Combs, C. A., French, S., Ahn, B. H., Fergusson, M. M., Balaban, R. S., et al. (2006). The mammalian longevity-associated gene product p66shc regulates mitochondrial metabolism. *J. Biol. Chem.* 281, 10555–10560. doi: 10.1074/jbc.M511626200
- Palmer, J. W., Tandler, B., and Hoppel, C. L. (1977). Biochemical properties of subsarcolemmal and inter-fibrillar mitochondria isolated from rat cardiac muscle. *J. Biol. Chem.* 252, 8731–8739.
- Palmer, J. W., Tandler, B., and Hoppel, C. L. (1986). Heterogeneous response of subsarcolemmal heart mitochondria to calcium. *Am. J. Physiol.* 250, H741–H748.
- Paneni, F., Costantino, S., Castello, L., Battista, R., Capretti, G., Chiandotto, S., et al. (2015). Targeting prolyl-isomerase Pin1 prevents mitochondrial oxidative stress and vascular dysfunction: insights in patients with diabetes. *Eur. Heart J.* 36, 817–828. doi: 10.1093/eurheartj/ehu179
- Pinton, P., Rimessi, A., Marchi, S., Orsini, F., Migliaccio, E., Giorgio, M., et al. (2007). Protein kinase C beta and prolyl isomerase 1 regulate mitochondrial effects of the life-span determinant p66Shc. *Science* 315, 659–663. doi: 10.1126/science.1135380
- Rota, M., Lecapitaine, N., Hosoda, T., Boni, A., De Angelis, A., Padin-Iruegas, M. E., et al. (2006). Diabetes promotes cardiac stem cell aging and heart failure, which are prevented by deletion of the p66shc gene. *Circ. Res.* 99, 42–52. doi: 10.1161/01.RES.0000231289.63468.08
- Sag, C. M., Santos, C. X., and Shah, A. M. (2014). Redox regulation of cardiac hypertrophy. *J. Mol. Cell. Cardiol.* 73, 103–111. doi: 10.1016/j.yjmcc.2014.02.002
- Skyschally, A., Schulz, R., Gres, P., Korth, H. G., and Heusch, G. (2003). Attenuation of ischemic preconditioning in pigs by scavenging of free oxyradicals with ascorbic acid. *Am. J. Physiol. Heart Circ. Physiol.* 284, H698–H703. doi: 10.1152/ajpheart.00693.2002
- Spescha, R. D., Klohs, J., Semerano, A., Giacalone, G., Derungs, R. S., Reiner, M. F., et al. (2015). Post-ischaemic silencing of p66Shc reduces ischaemia/reperfusion brain injury and its expression correlates to clinical outcome in stroke. *Eur. Heart J.* 36, 1590–1600. doi: 10.1093/eurheartj/ehv140
- Spescha, R. D., Shi, Y., Wegener, S., Keller, S., Weber, B., Wyss, M. M., et al. (2013). Deletion of the ageing gene p66(Shc) reduces early stroke size following ischaemia/reperfusion brain injury. *Eur. Heart J.* 34, 96–103. doi: 10.1093/eurheartj/ehs331
- St-Pierre, J., Buckingham, J. A., Roebuck, S. J., and Brand, M. D. (2002). Topology of superoxide production from different sites in the mitochondrial electron transport chain. *J. Biol. Chem.* 277, 44784–44790. doi: 10.1074/jbc.M207217200
- Trinei, M., Giorgio, M., Cicalese, A., Barozzi, S., Ventura, A., Migliaccio, E., et al. (2002). A p53-p66Shc signalling pathway controls intracellular redox status,

- levels of oxidation-damaged DNA and oxidative stress-induced apoptosis. *Oncogene* 21, 3872–3878. doi: 10.1038/sj.onc.1205513
- Vono, R., Fuoco, C., Testa, S., Pirro, S., Maselli, D., Ferland Mccollough, D., et al. (2016). Activation of the pro-oxidant PKC $\beta$ II-p66Shc signaling pathway contributes to pericyte dysfunction in skeletal ischemia muscles of patients with diabetes with critical limb. *Diabetes* 65, 3691–3704. doi: 10.2337/db16-0248
- Xu, X., Zhu, X., Ma, M., Han, Y., Hu, C., Yuan, S., et al. (2016). p66Shc: a novel biomarker of tubular oxidative injury in patients with diabetic nephropathy. *Sci. Rep.* 6:29302. doi: 10.1038/srep29302
- Yan, H., Jihong, Y., Feng, Z., Xiaomei, X., Xiaohan, Z., Guangzhi, W., et al. (2014). Sirtuin 1-mediated inhibition of p66shc expression alleviates liver ischemia/reperfusion injury. *Crit. Care Med.* 42, e373–e381. doi: 10.1097/CCM.0000000000000246
- Yang, M., Stowe, D. F., Udoh, K. B., Heisner, J. S., and Camara, A. K. (2014). Reversible blockade of complex I or inhibition of PKC $\beta$  reduces activation and mitochondria translocation of p66Shc to preserve cardiac function after ischemia. *PLoS ONE* 9:e113534. doi: 10.1371/journal.pone.0113534
- Zaccagnini, G., Martelli, F., Fasanaro, P., Magenta, A., Gaetano, C., Di Carlo, A., et al. (2004). p66ShcA modulates tissue response to hindlimb ischemia. *Circulation* 109, 2917–2923. doi: 10.1161/01.CIR.0000129309.58874.0F
- Zhu, M., Ding, J., Jiang, H., Kong, L., Sun, Z., Chen, J., et al. (2015). Propofol ameliorates endothelial inflammation induced by hypoxia/reoxygenation in human umbilical vein endothelial cells: role of phosphatase A2. *Vascul. Pharmacol.* 73, 149–157. doi: 10.1016/j.vph.2015.06.002
- Zweier, J. L., Flaherty, J. T., and Weisfeldt, M. L. (1987). Direct measurement of free radical generation following reperfusion of ischemic myocardium. *Proc. Natl. Acad. Sci. U.S.A.* 84, 1404–1407. doi: 10.1073/pnas.84.5.1404

**Conflict of Interest Statement:** RS received research grants from Zealand Pharma and honoraria for lectures and advisory boards from AstraZeneca, Recordati, Sanofi, and Servier. PF is a founder and CEO of Pharmahungary Group.

The other authors declare that the research was conducted in the absence of any commercial or financial relationships that could be construed as a potential conflict of interest.

Copyright © 2017 Boengler, Bencsik, Palóczy, Kiss, Pipicz, Pipis, Ferdinandy, Schlüter and Schulz. This is an open-access article distributed under the terms of the Creative Commons Attribution License (CC BY). The use, distribution or reproduction in other forums is permitted, provided the original author(s) or licensor are credited and that the original publication in this journal is cited, in accordance with accepted academic practice. No use, distribution or reproduction is permitted which does not comply with these terms.